



videogameperfection.com

© Bas Gialopsos 2026

Morph 4K – Fan Mount Cooling Upgrade kit



Table of Contents

Description and Contents of the Kit

Tools Required

Caution

Disclaimer

Installation Instructions

Support and Contact

Morph 4K – Fan Mount Cooling Upgrade kit

Description



The Kit has been designed to provide good airflow around the MORPH 4K's main PCB, it will provide a cooler environment for the FPGA and processing chips.

Slots in the top of the bracket fit inline with the top cover case supports to provide a seal to increase air movement efficiency.

Contents of the kit

1x Custom 3D printed fan mount.

1x 2 pin right angled pin header.

3x M2 Torx screws to mount the bracket.

We recommend the fitting of a Noctua NF-A4x10 5V (3 Pin variant) to minimise noise but any suitable equivalent can be used.

Tools Required

Torx screwdrivers types M2 and T10

25-40 Watt soldering iron with medium tip.

Suitable solder and liquid flux if required.

99.9% Isopropyl alcohol and some cotton buds or Qtips

CAUTION

It is imperative that anti-static precautions are followed and adhered to at ALL times. Static damage can shorten the working life of Integrated circuits.

Always work on a clean bench with good light visibility and ensure you have adequate ventilation when soldering.

Always take your time and work slowly and carefully, read and study the text and images within this document as many times as necessary, until you are clear and confident to proceed.

If in any doubt please [contact us](#) for help and support.

Disclaimer

This product has been designed to fit carefully within the Morph 4K case enclosure with adequate clearance provided for nearby PCB mounted surface mount components.

It is essential the mount is orientated correctly to avoid any damage to the main PCB.

We cannot be held liable for any damage caused due to poor installation of the upgrade, if you have any doubts please [contact us](#) to install the module for you professionally.

Installation

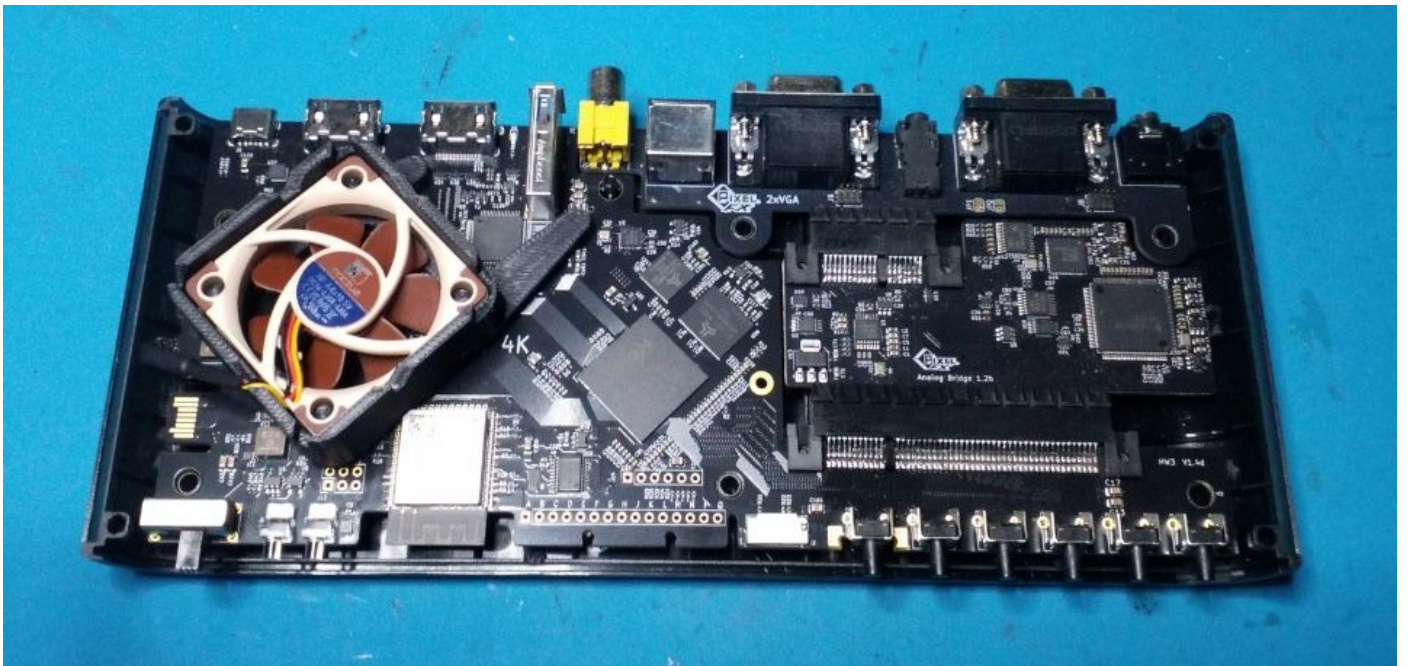
Flip the Morph 4K upside down, slowly and gently remove the 4 rubber feet and put them safely aside.

Using a Torx T10 Driver remove the six fixing screws carefully and again put them safely aside.



Turn the unit over and then slowly remove the top cover.

Carefully remove the slot-in rear and front case panels.



Now, carefully remove any expansion and or breakout boards you may have fitted (e.g Analogue Bridge).

At this point before removing the main PCB it is worth temporarily placing the bare fan mount to identify the correct orientation.

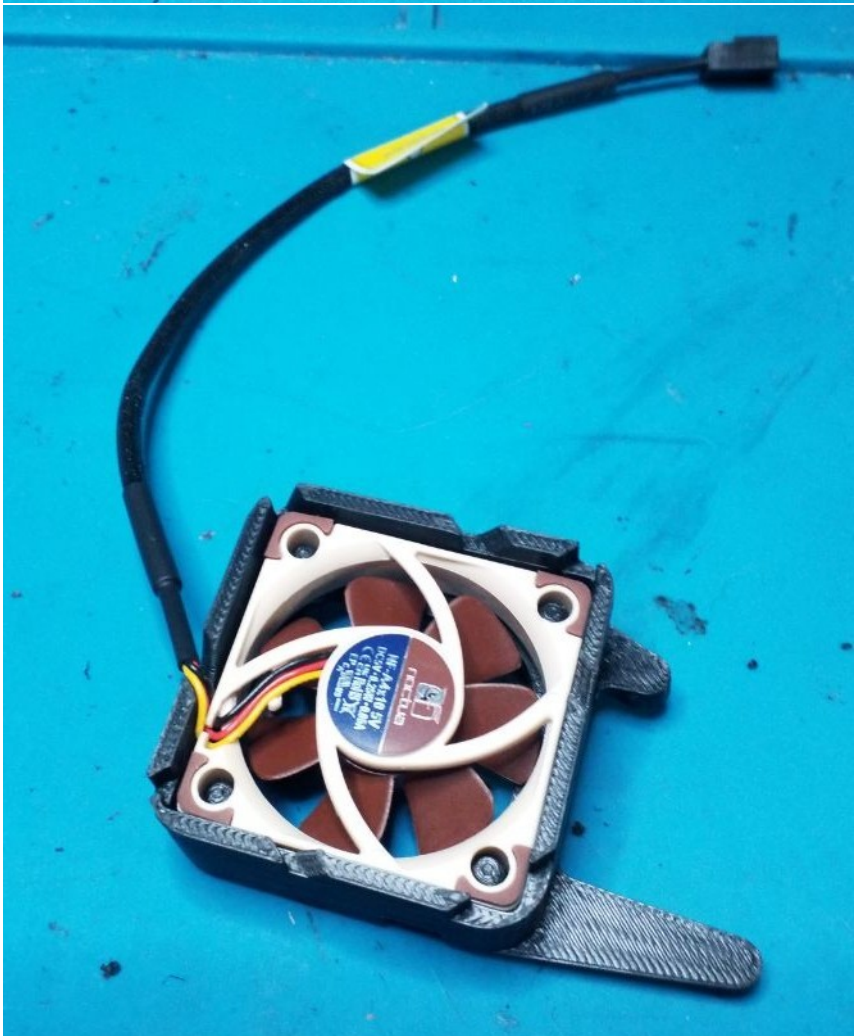
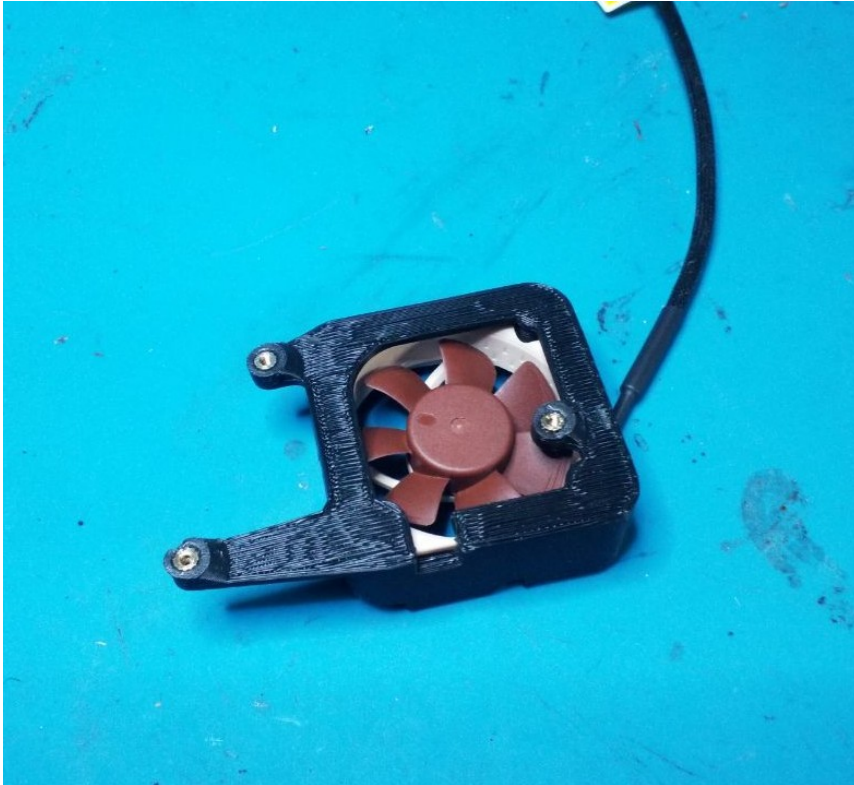


Once you are familiar with the correct orientation you can now remove the main Morph 4K pcb from the base of the enclosure.

Pay special attention to the two front plastic LED Lenses (light pipes), they can fall off and get lost easily, you can remove them and refit them during reassembly if you wish.

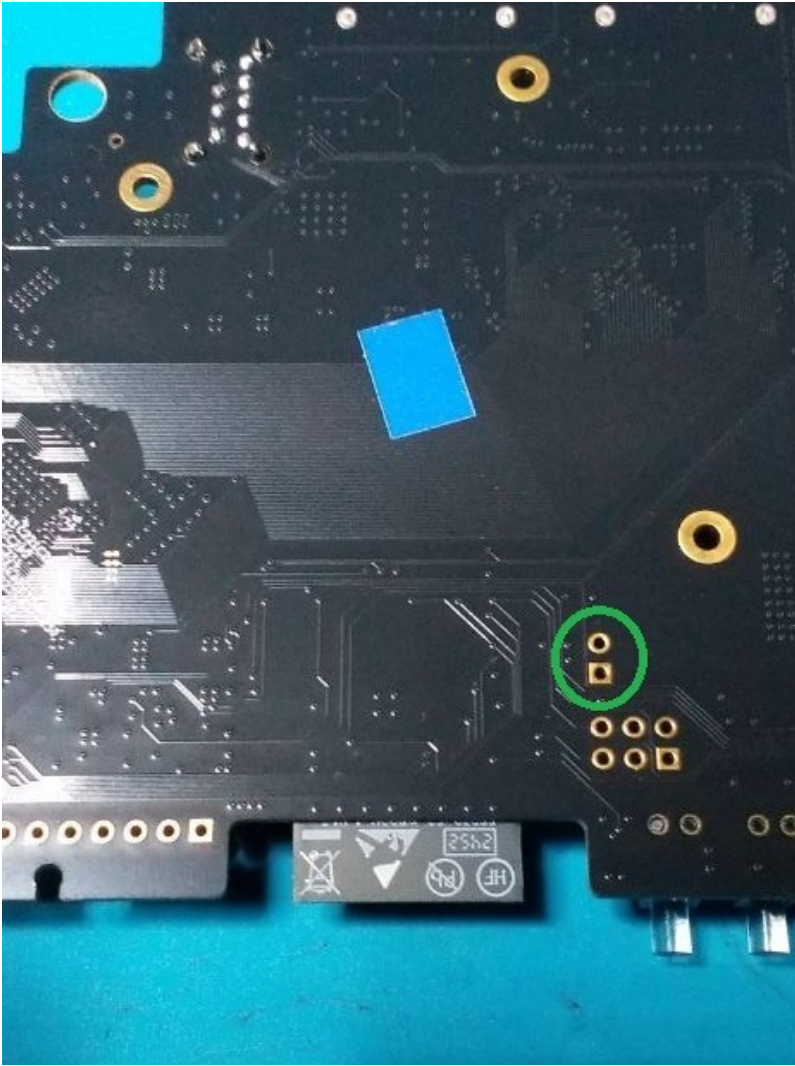
Now it is time to mount your preferred fan into the fan holder bracket.

We will be using the recommended Noctua fan in the following illustrations.

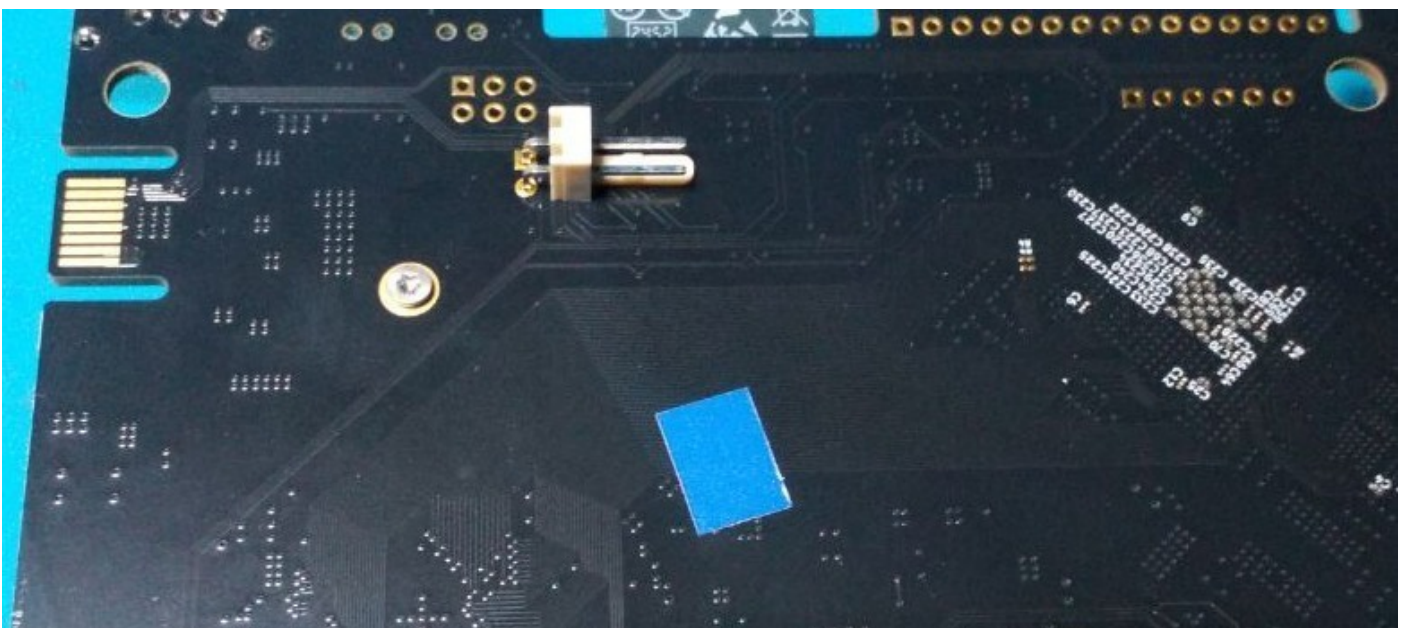


Notice the cutout on the side of the mount which allows for the cable to exit safely.

Flip the MORPH 4K pcb over and identify the two through holes on the pcb circled in green in the following image



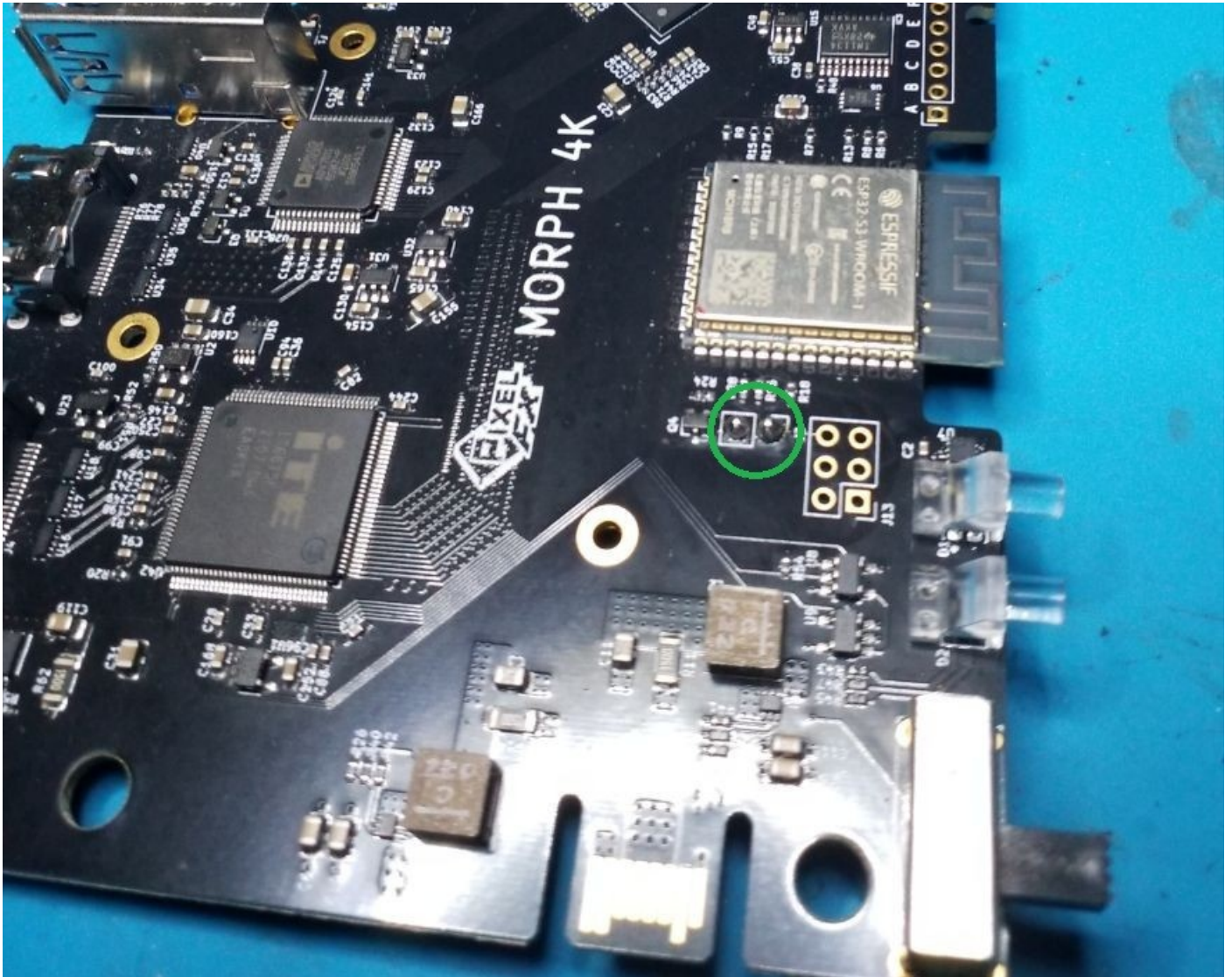
Fit the supplied 2pin right angle pcb header as shown below, orientation is critical.



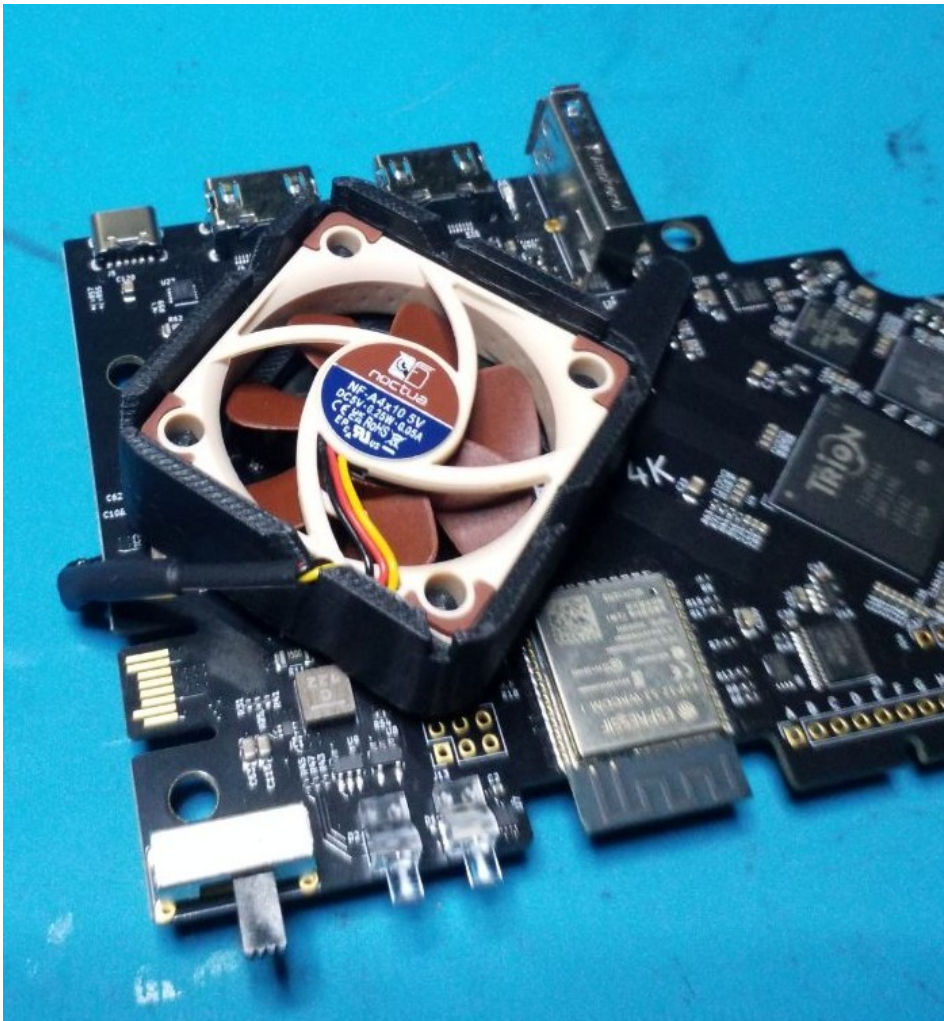
The 2 pin header must now be soldered on the other side of the main board, the two solder points are within the circle in the image below.

Please use standard working practices with suitable flux and solder to carry out this step.

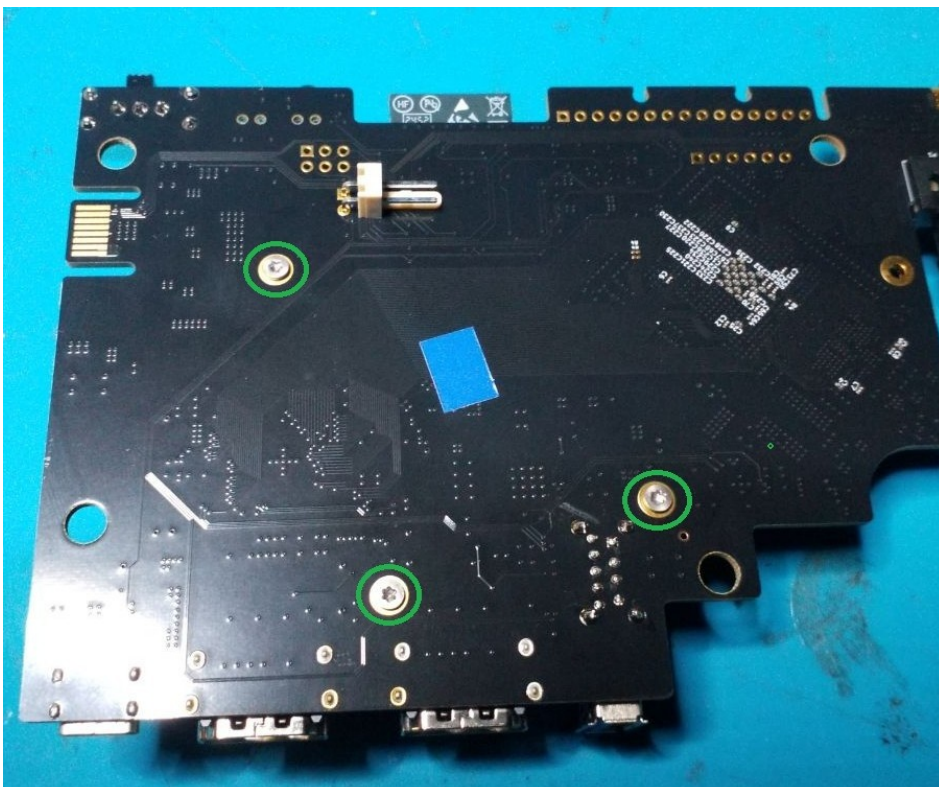
When completed, remove any flux residue using a Qtip with 99.9% Isopropyl alcohol.



Now its time to fit the fan assembly to the main pcb as shown below, notice that the fan cable exits on the left hand side.



Flip the board over and secure the bracket to the pcb using the 3 supplied M2 Torx bolts with a suitable M2 Torx driver. The 3 mount points are shown in the image below circled in green.

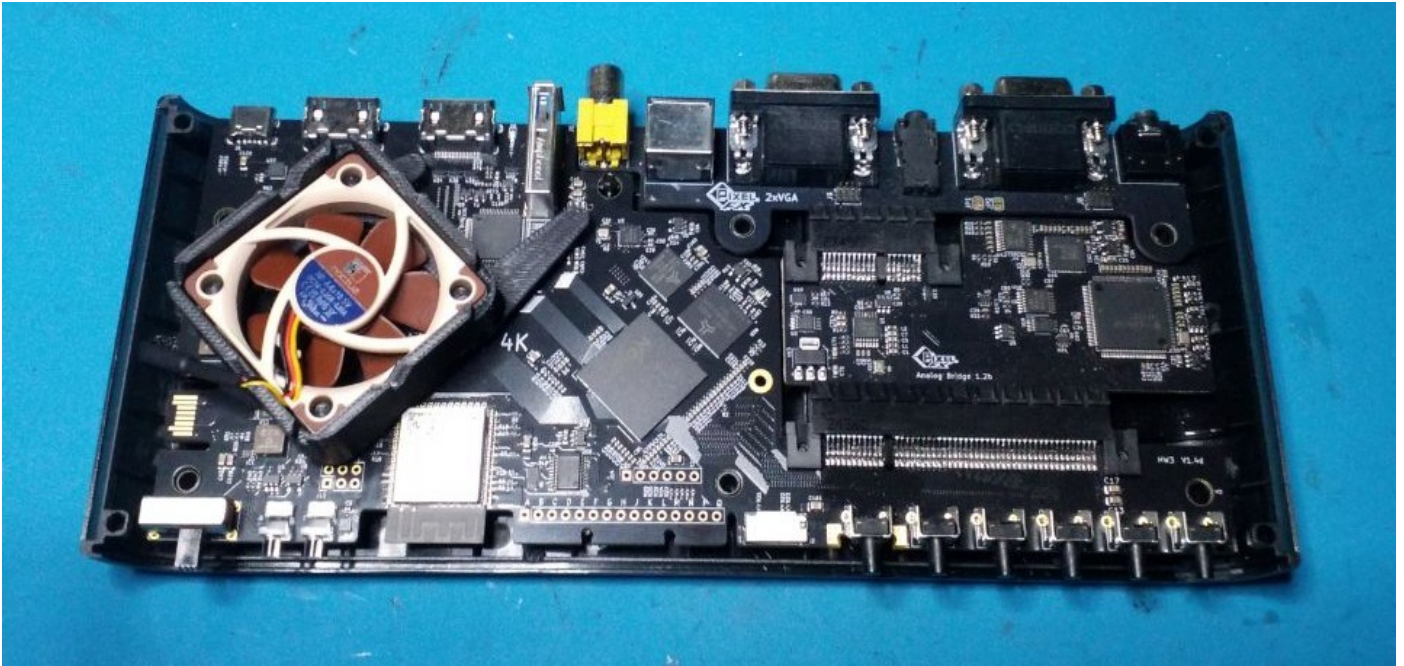


Fold and route the Fan cable as shown in the image below and insert the fans header onto the new 2 pin pcb header.

NOTE: We are only using 2 of the 3 contacts of the fan socket.



The installation is now complete, carefully refit the main pcb into the bottom enclosure of the case paying special attention to the fan cable clearance and positioning on the pcb underside.



Refit any expansion or breakout boards you may have.

Install the front and rear slot on covers. Ensure the 2 front plastic led lenses/light pipes are fitted and correctly in place.



Follow the disassembly procedure in reverse and the upgrade is complete.

Support and Contact

For all sales or installation enquiries contact VideoGamePerfection.com using this page - <https://videogameperfection.com/contact-us/>

Community based technical support is also available in the VGP forums - <https://videogameperfection.com/forums/forum/pixelfx-products/morph-4k/>



videogameperfection.com

Copyright 2026 BetaGamma Computing

Proudly Manufactured and assembled In Corfu, Greece

rel 1 - 18.04.2026